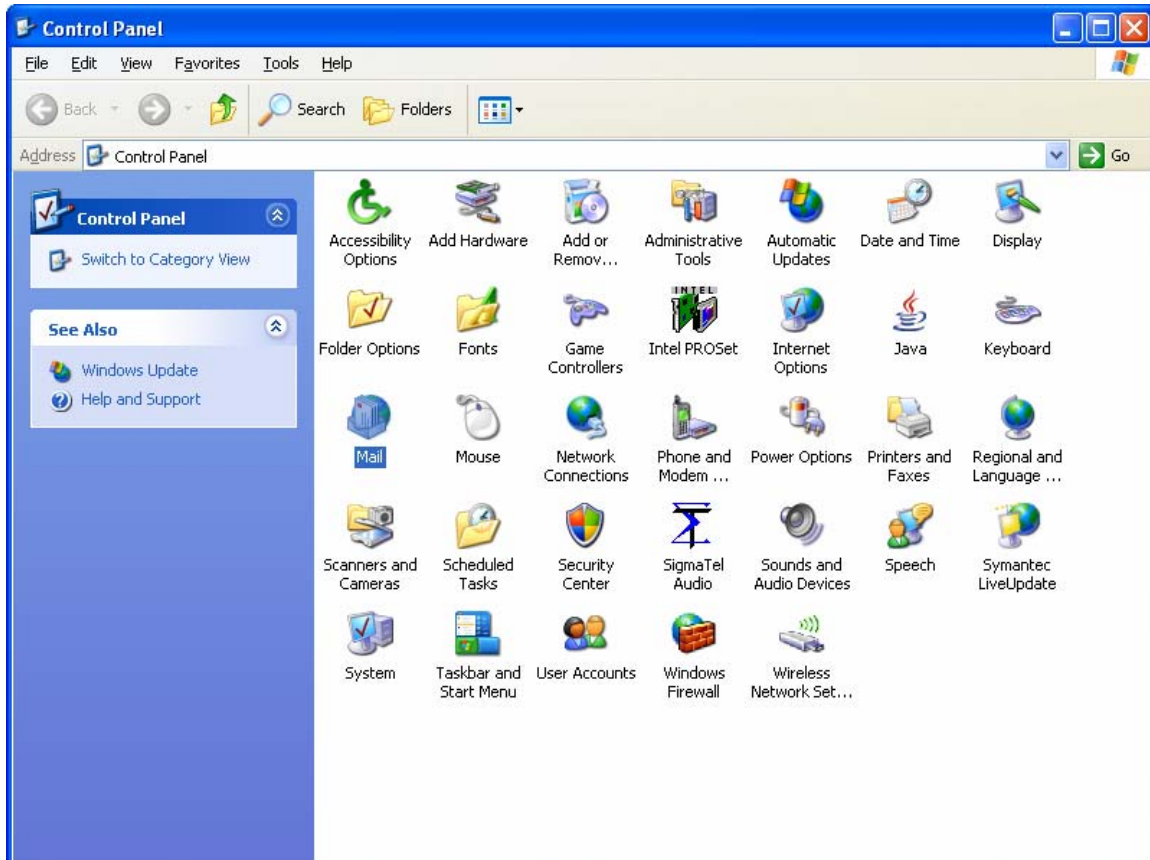


Pyron Technologies Hosted Exchange Outlook Setup

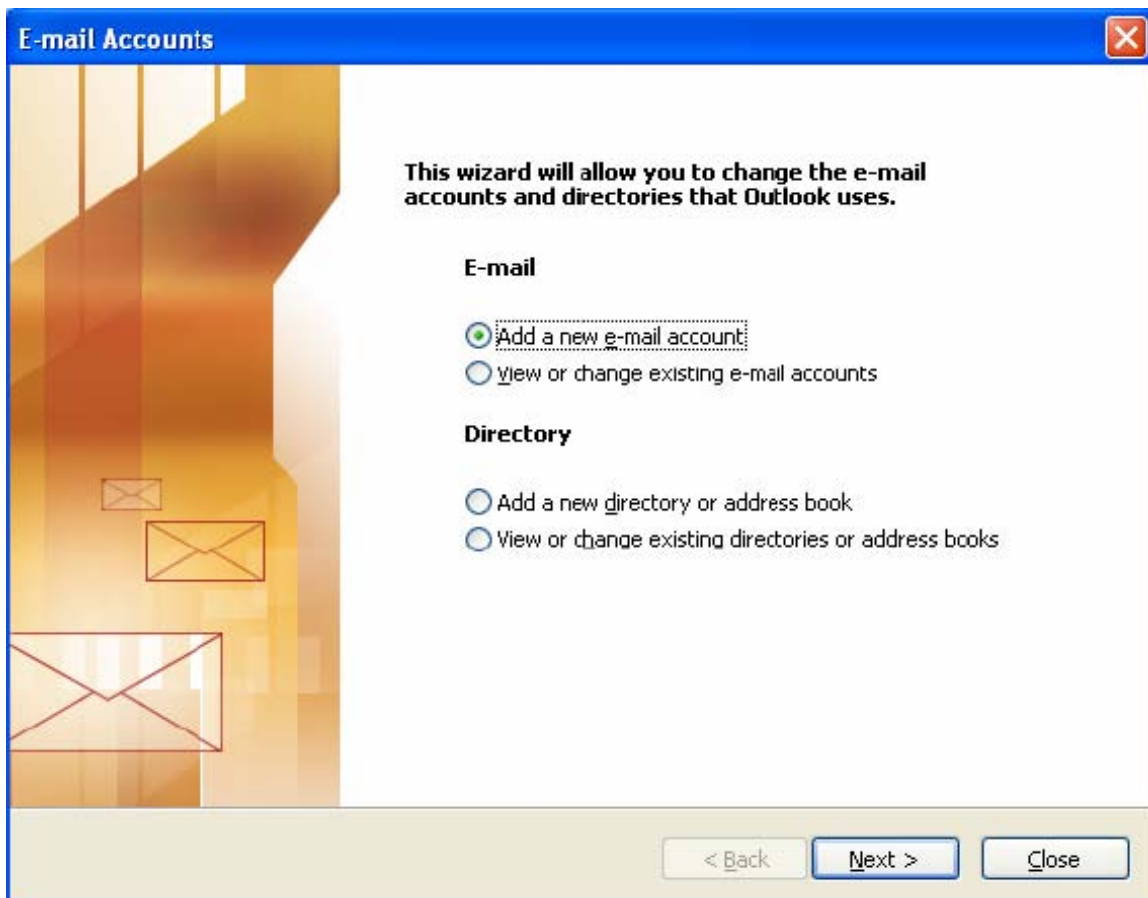
Open up control panel from the start menu.



Find and Click on the Mail Icon. If you are using windows XP and you can't find it, check under the users accounts icon.



Select the email accounts button. Select add a new email account Make sure you select the Microsoft Exchange server button and hit next.



E-mail Accounts



Server Type

You can choose the type of server your new e-mail account will work with.



Microsoft Exchange Server

Connect to an Exchange server to read e-mail, access public folders, and share documents.

POP3

Connect to a POP3 e-mail server to download your e-mail.

IMAP

Connect to an IMAP e-mail server to download e-mail and synchronize mailbox folders.

HTTP

Connect to an HTTP e-mail server such as Hotmail to download e-mail and synchronize mailbox folders.

Additional Server Types

Connect to another workgroup or 3rd-party mail server.

< Back

Next >

Cancel

E-mail Accounts

Exchange Server Settings

You can enter the required information to connect to your Exchange server.

Type the name of your Microsoft Exchange Server computer. For information, see your system administrator.

Microsoft Exchange Server:

Use Cached Exchange Mode

Type the name of the mailbox set up for you by your administrator. The mailbox name is usually your user name.

User Name:

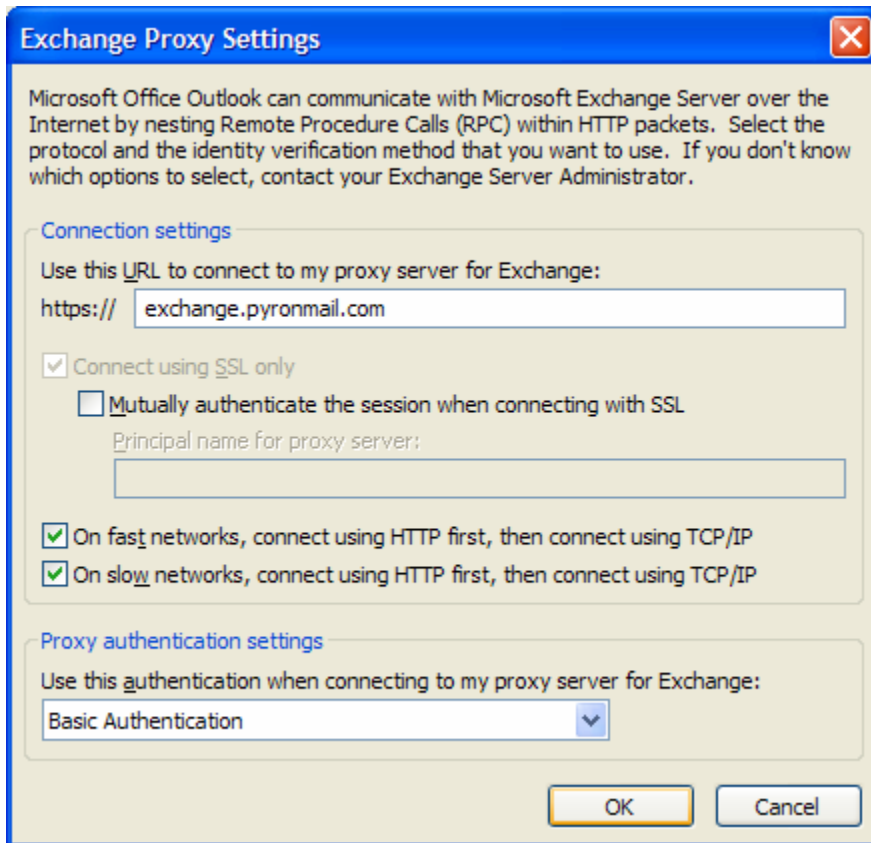
The Microsoft Exchange Server name will be BE02.pyron.hosting.

Your username will be your email address. Example: Joe@domain.com Then Select the more settings button

Move over to the 4th tab on the top (connection)



At the bottom of the screen you should see “connect to my Exchange Mailbox using HTTP”. Put a check in the box next to it and select Exchange Proxy Settings.



The url of the exchange server is Exchange.pyronmail.com, make sure the connect using the SSL only check box is selected and the bottom 2 check boxes are also selected. Hit ok twice and then Next. On the finish screen click finish. Open the Outlook client and type your username and password



Select ok and you are done setting up your account.